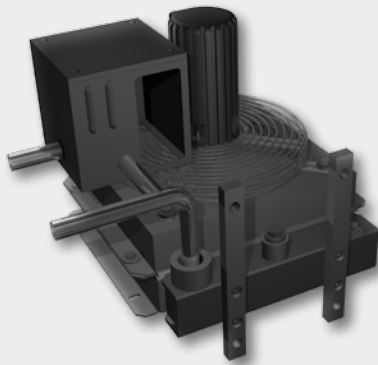


## ANTI-STAGNATION UNIT WITH 3-WAY MOTOR SWITCH VALVE



### Product description

Ready-to-install, cascadable anti-stagnation unit prevents stagnation of collector arrays up to 150 m<sup>2</sup> and thereby rapid material fatigue. Applications include zones with above-average solar radiation or systems with maximised solar coverage factor. A three-way changeover valve switches the solar circuit to cooling from 110 °C. The unit is completely fitted with pipes and needs only 2 compression fittings for connection to the solar circuit. Because the unit is designed to be weather- and corrosion-resistant, outdoor installation is possible.

**Note:** The electrical drive motor must be protected from the weather by suitable measures!

### Specifications

<b>Type</b>	<b>ASE 150</b>	
<b>Item no.</b>	<b>1510418</b>	
<b>Connections</b>	2x compression fitting DN28	
<b>Max. collector area</b>	150 m <sup>2</sup>	
<b>Installation options:</b>	Floor installation	
<b>Cooler</b>	Type	AKG T6
	Dimensions L x W x H	607x450x790
	Power	75.3 kW
	Pressure loss	21 mbar
	Material	Aluminium
	Gross weight	49 kg
	Max. operating pressure	26 bar
<b>Ventilator</b>	Type	3-phase current
	Diameter	500 mm
	Speed	1500 rpm
	Noise level	79 dB (A) at 1 metre
	Motor voltage	230/400V
	Power	550 W
<b>3-way switching valve</b>	Type	EMV 110 F3L
	Connected voltage	230 V, 50 Hz
	Connection	1" female thread
	Power consumption during operation	7.5 VA
	Time per rotation	18s/90°
	Max. pressure	6 bar
	Max. temperature	110°C
	Cover material	Steel plate
	Piping	∅ 28 mm stainless steel
<b>Installation material</b>	Screws	Select according to surface
	Anchor plugs	Select according to surface
<b>Piping</b>	Material	Stainless steel
	Dimension	DN28
	Fittings	4x 90°
<b>Compression fitting</b>	Material	Brass
	Dimension	28 mm

**Caution:** The 3-way switching valve and the fan motor should be controlled by the TiSUN power relay LR 20 3S. The cooling circuit must be switched on if the collector temperature reaches 120 °C!

# CHARGING AND DISCHARGING STATIONS

## FUNCTIONAL SCHEMATIC

