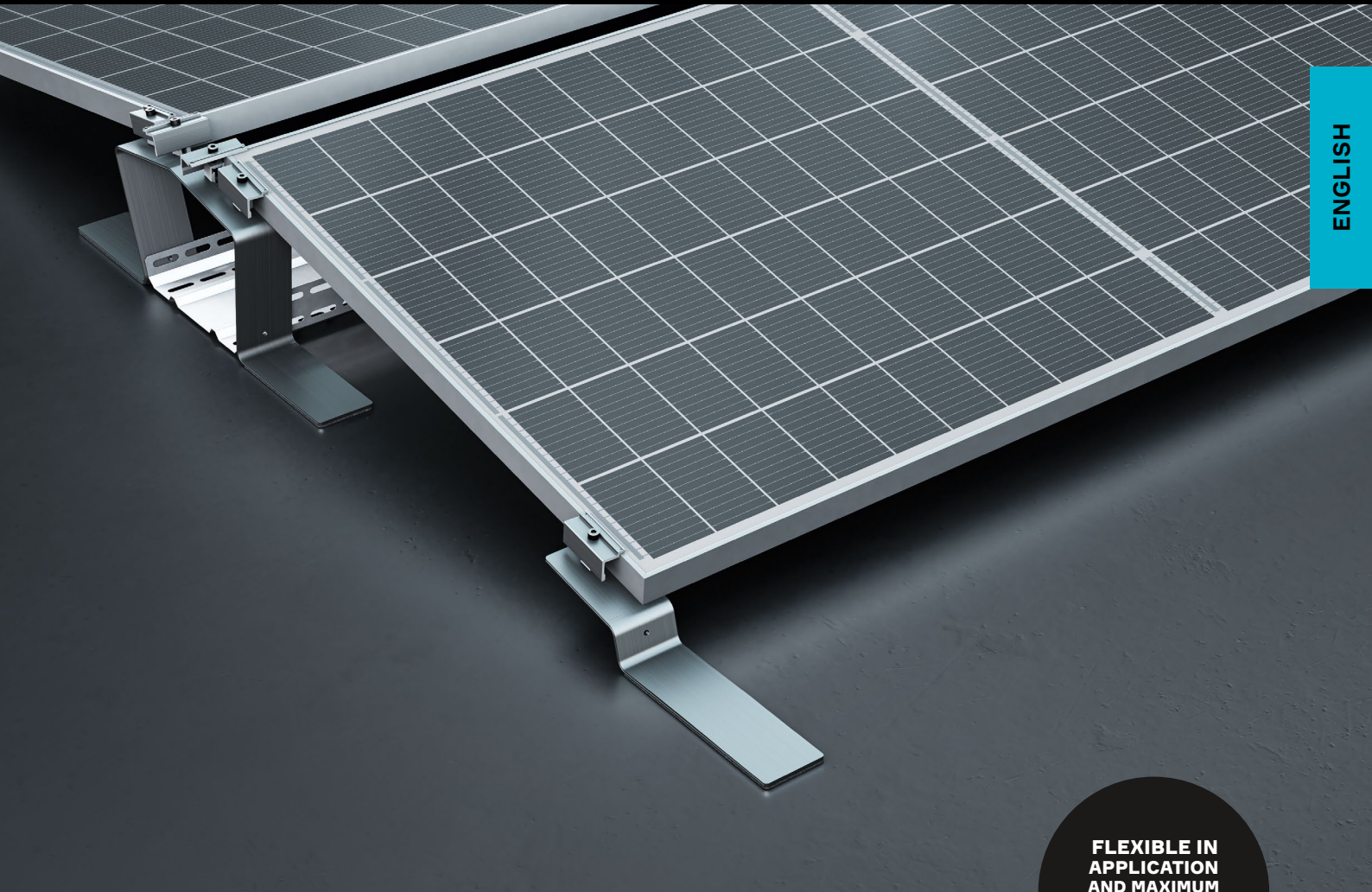


AEROCOMPACT®



ENGLISH

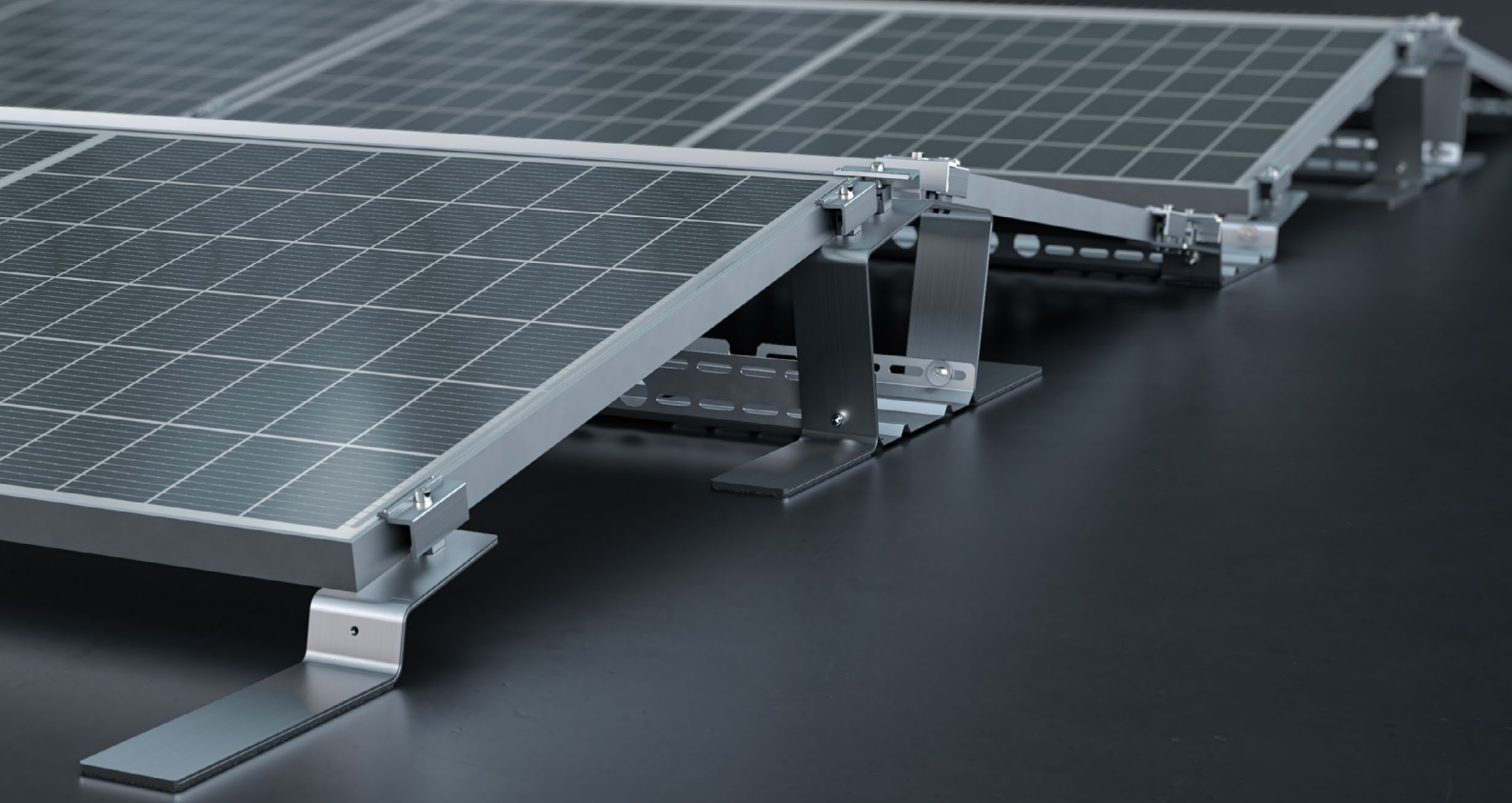
**FLEXIBLE IN
APPLICATION
AND MAXIMUM
SAFETY**

COMPACT**FLAT S10 PLUS**

WITH THE COMPACTFLAT S SYSTEM, WE REVOLUTIONIZED THE WORLD OF PV SUBSTRUCTURES. WE CHALLENGED THE STANDARD RAIL SUBSTRUCTURES ON THE MARKET AND DESIGNED SUBSTRUCTURES BASED ON ALUMINUM BRACKETS, MAKING A NAME FOR OURSELVES WORLDWIDE.

INTELLIGENT SOLAR RACKING

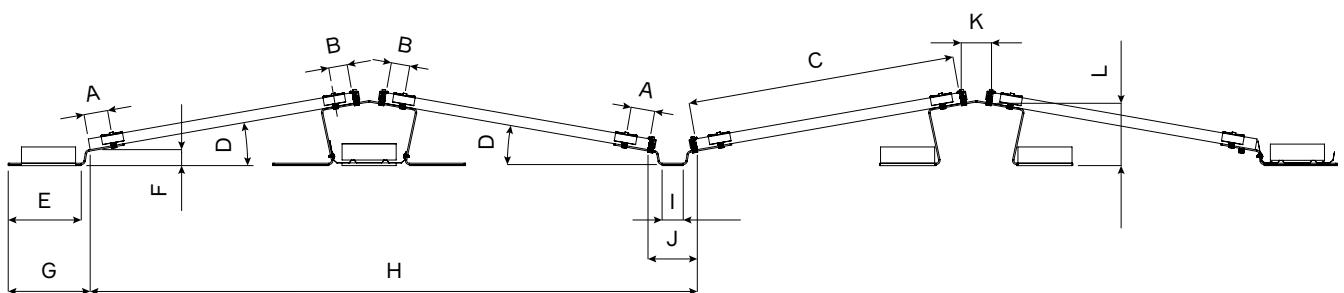
- + Short assembly times
- + Low transport costs
- + Few components
- + Maximum safety due to extensive wind tunnel tests
- + Incl. pre-assembled PES protection pad
- + Module clamps with integrated grounding pins



BRACKET SYSTEM – EAST / WEST 10°

COMPACTFLAT S10 PLUS

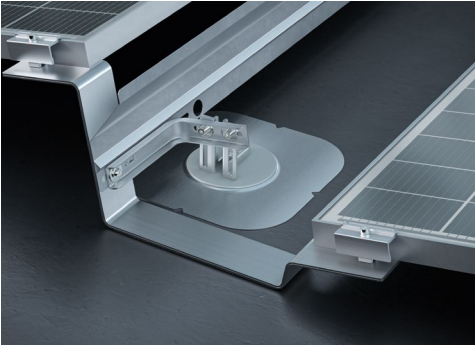
The system, as part of the COMPACTFLAT product range, is an aerodynamic east–west-substructure for the fixing and aligning of PV modules on flat roofs. The module inclination is 10° and results in row spacings of 297 mm and 464 mm. The aerodynamic design has outstanding static properties and requires surprisingly little ballast. This system is also available as an alpine version.



	A [mm]	B [mm]	C* [mm]	D [°]	E [mm]	F [mm]	G [mm]	H* [mm]	I [mm]	J [mm]	K [mm]	L [mm]
S10 PLUS – 182 mm – Short spacing	88,5	69	950–1150	10	270	59	303	2163–2568	78	182	112	230
S10 PLUS – 350 mm – Long spacing	88,5	69	950–1150	10	270	59	303	2331–2736	245	350	112	230

* depending on the PV-module dimensions

ADDITIONAL COMPONENTS



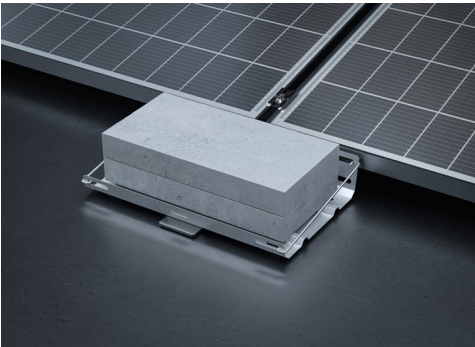
ROOF CONNECTION

AEROCOMPACT offers a sophisticated hybrid solution for roofs that cannot withstand the additional weight of a photovoltaic system. The combination of roof fastening points and ballast reduces the overall weight of the system. This option can also be used in areas with seismic activity to prevent the system from shifting due to earthquake influences.



ALPINE VERSION

Our alpine version is used from a certain snow load, which is calculated by our online software AEROTOOL based on the project.



BALLAST TRAYS

This system variant with ballast trays, available in various sizes, is mainly used in areas with high wind loads and roofs with low point loads. The main advantages of this installation variant are, on the one hand, the additional ballast that can be installed per module and, on the other hand, the even distribution of the concentrated load on the roofing. The ballast tray can also be used for ballasting on gravel roofs by putting the gravel into the ballast trays. With the additional ballast securing bracket, the ballast stones are secured against slipping from the tray and ideally distributed.



CABLE MANAGEMENT

The cable management solution for string cabling of the rows is UL-certified and available as a standard product.

AEROCOMPACT®

- + No roof penetration
- + suitable for roof edge areas
- + Wind tunnel-tested
- + Pre-installed building protection mat
- + Quickest installation: 1 kWp / 5 min. / 2 people
- + Developed in Austria

DESCRIPTION	Aerodynamic installation system for the stand-mounting of framed PV modules on flat roofs.
AREA OF APPLICATION	On foil and bitumen roofs with and without heat insulation beneath the sealing, as well as on concrete roofs; can be adapted for gravel and green roofs upon request
MODULE DIMENSIONS	950 – 1.150 mm × 1.500 – 2.250 mm (width × length)
INSTALLATION ANGLE	10°, unilateral
DISTANCE TO ROOF SURFACE	Approx. 60 mm; potentially less on gravel roof
DISTANCE FROM THE ROOF EDGE	1.200 mm (less corner spacing upon request)
MAX. ROOF INCLINATION	Up to 5° possible without roof anchors; above 5° only with roof anchors
MAX. FIELD SIZE	12 × 8 double rows; 192 modules
MIN. FIELD SIZE	1 double row for every 2 modules
WIND LOAD	Up to 2.4 kN/m ²
SNOW LOAD	S10 PLUS standard: up to 2.4 kN/m ² , S10 PLUS alpine: up to 4.4 kN/m ²
DESIGN / PROOF OF STABILITY	Software-supported based on wind tunnel analyses
ON-SITE REQUIREMENTS	Sufficient structural load-bearing capacity of the roof structure and the building's supporting structure, as well as adequate compressive strength of the roof structure, must be ensured on site. The general terms and conditions, terms of warranty, and the user agreement apply.
COMPONENTS	Module clamps with grounding pins, flat-roof brackets, wind deflector plates, ballast stones; optional lateral plates, ballast trays, roof anchors
MATERIALS	Bearing connecting parts made from aluminum EN AW 6060 T64; module clamps made from aluminum EN AW 6063 T66; screws made from stainless steel A2-70; wind deflector plates and ballast trays made from steel with aluminum-zinc coating; building protection mat made from polyester fleece