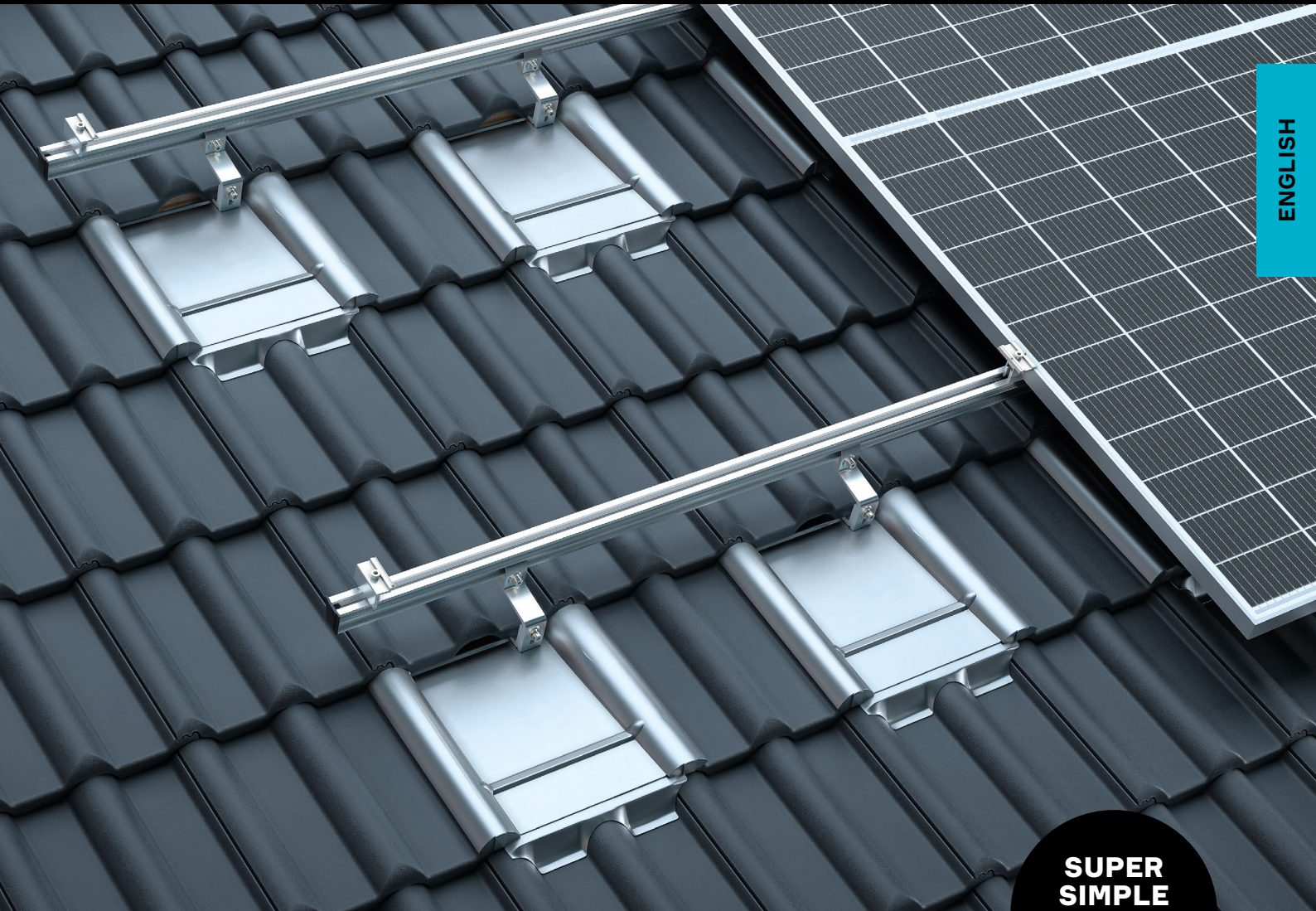


# AEROCOMPACT®

ENGLISH



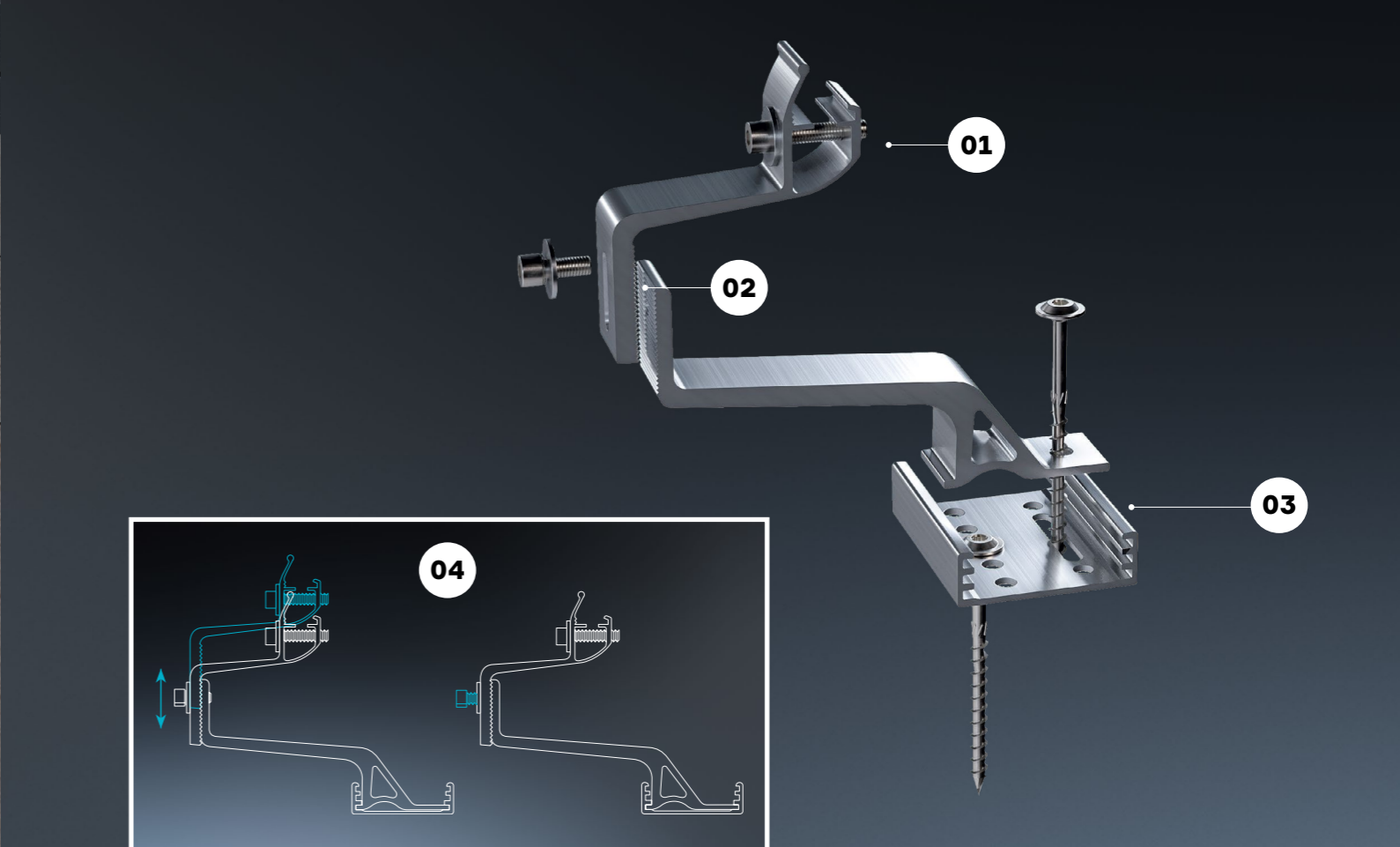
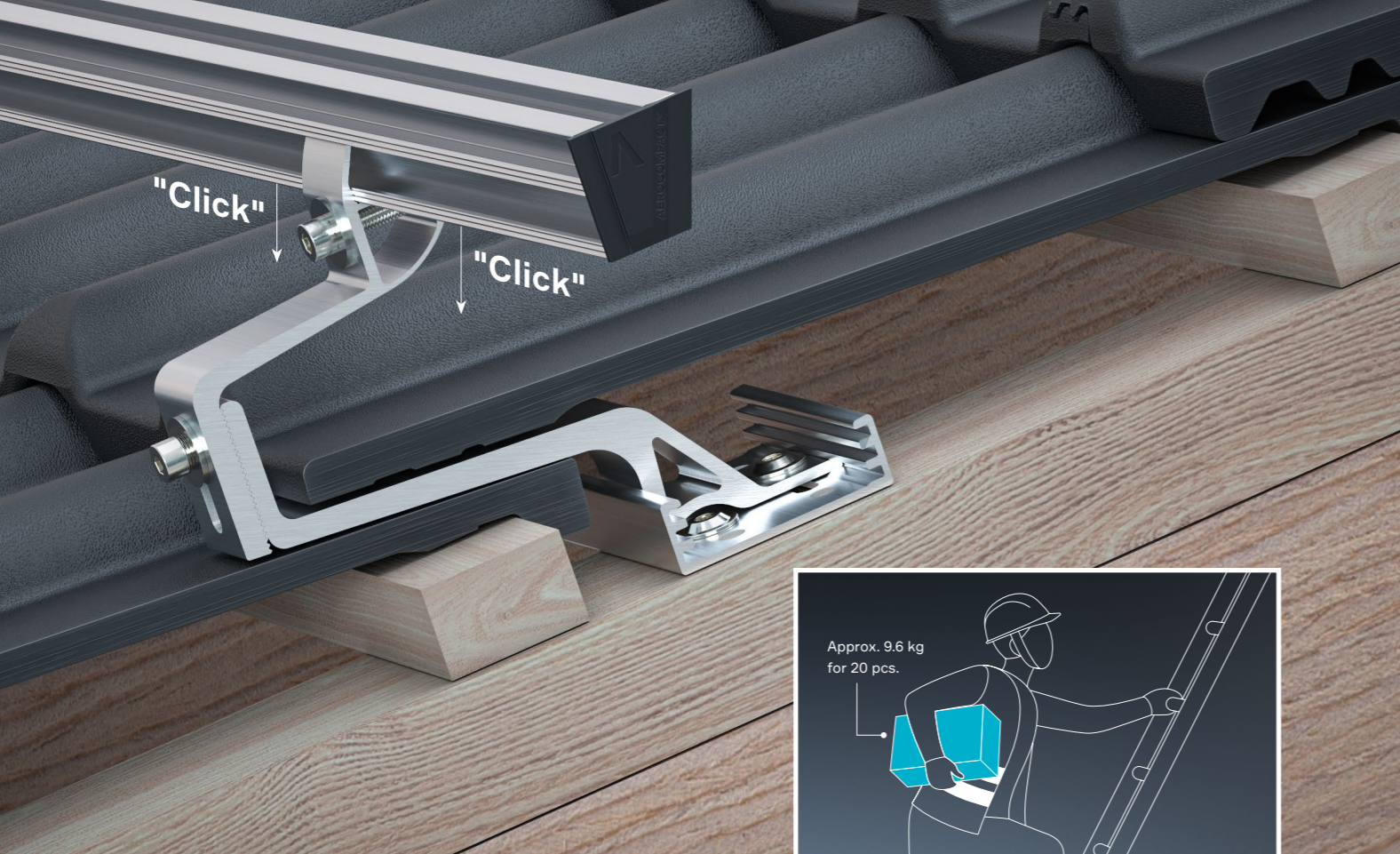
**SUPER  
SIMPLE  
SUPER  
FAST**

## COMPACT **PITCH XT-R**

**ATTACH TO THE RAFTER, SNAP IN THE RAIL, ALIGN HORIZONTALLY, TIGHTEN – DONE! THANKS TO THE REDUCED NUMBER OF COMPONENTS, THE NEW XT-R ROOF HOOK IS A TIME-SAVING SOLUTION FOR MOUNTING PV MODULES ONTO PITCHED ROOFS.**

### **INTELLIGENT SOLAR RACKING**

- + Integrated quick release
- + Foldable design
- + Cost-effective storage
- + One-man assembly
- + Precise levelling
- + Intelligent adjustment



## THE CHALLENGE

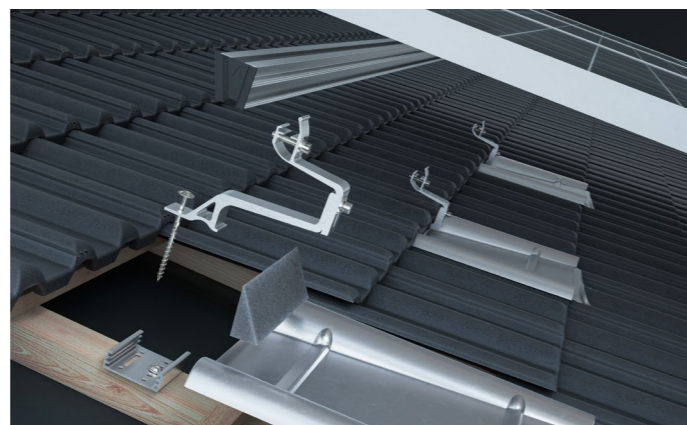
**Bulky or inflexible parts on commercially available roof hooks make transportation to the construction site difficult. The large number of product parts makes quick installation difficult.**

Additional process steps in production have an impact on production costs and therefore on the final price for customers. Current roof hook series increase the transport volume due to their bulky components. Smaller assemblies, such as the quick release, could not be adequately secured during delivery.

## THE SOLUTION

**Thanks to the intelligent reduction of product elements and an integrated quick-release clamp, AEROCOMPACT optimizes the installation process and makes assembly much more efficient.**

The proven three-stage AEROCOMPACT grid of the base plate enables uncomplicated adjustment to the height of the roof battens and ensures high stability. The new COMPACTPITCH XT-R roof hook is an improved alternative to its predecessor models and makes installation considerably easier: simply attach the XT-R roof hook to the rafter, snap in the rail, align horizontally, tighten – done! The XT-R series therefore positions itself as an extremely efficient solution for use on tiled roofs and scores points above all with its quick and easy installation.



## ONE HOOK FOR EVERYTHING

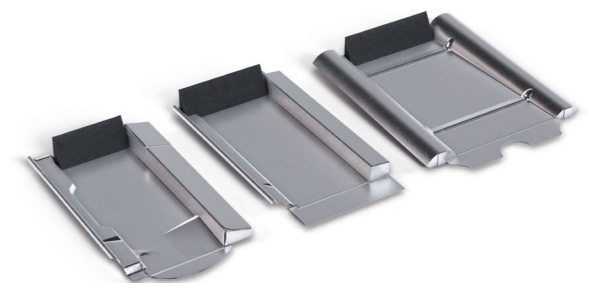
- 01 THE QUICK RELEASE**  
The XT-R roof hook is supplied with an integrated quick release. The click mechanism makes installation and handling much more efficient.
- 02 SPACE-SAVING PRODUCT COMPONENTS**  
Thanks to the new product design, the XT-R roof hook can be easily folded. This reduces transportation and storage costs.
- 03 QUICK FIXING**  
The base plate is positioned and fixed to the rafter with just one screw. After adjustment to the roof batten height using 3-level structuring, the roof hook is fixed in place.
- 04 INTELLIGENT ADJUSTMENT**  
The small-tooth ratchet in combination with the disc spring allows the rail to be easily leveled and prevents the upper part of the hook from slipping during installation.

## ALSO NEW: COMPACTPITCH XM-B

**The new XM-B replacement tile system works in conjunction with the XT-R hook to replace the original concrete or clay tile.**

The XM-B family can be used for the most common roof tile types in Europe and supports their durability. Especially in regions where high snow loads are to be expected, metal replacement tiles guarantee a reduced risk of breakage in contrast to conventional tiles.

A foam wedge is also included for optimum sealing against water ingress (tested watertightness in accordance with prEN15601), and the adjustable metal apron means that the XM-B can be fitted easily and without tools – eliminating the need for mechanical processing of the roof tiles and making installation safer overall.



Here you will find a detailed list of suitable tile types



# AEROCOMPACT®

## TECHNICAL DATA

<b>DESCRIPTION</b>	Rail-based mounting systems for framed PV modules on roof tiles and pantiles
<b>AREA OF APPLICATION</b>	On roof tiles and pantiles
<b>MODULE DIMENSIONS</b>	Any length and width, frame height 30-50 mm
<b>PANEL TILT</b>	Parallel to the roof
<b>DISTANCE TO ROOF SURFACE</b>	Min. 100 mm
<b>DISTANCE FROM THE ROOF EDGE</b>	No minimum distance, roof areas F and G according to EN 1991-1-4 can be occupied
<b>MAX. ROOF INCLINATION</b>	60°, with suitable PV modules also steeper
<b>MAX. FIELD SIZE</b>	Approx. 12 m, along continuous rail, otherwise unlimited
<b>MIN. FIELD SIZE</b>	1 x 1 Modul
<b>WIND LOAD</b>	Suction load up to 2,4 kN/m <sup>2</sup> (kPa)
<b>SNOW LOAD</b>	Compressive load up to 6,0 kN/m <sup>2</sup> (kPa)
<b>DESIGN / PROOF OF STABILITY</b>	Software-supported on the basis of European/international standardization
<b>ON-SITE REQUIREMENTS</b>	Sufficient static load-bearing capacity of the roof structure and the building support structure as well as sufficient pressure load-bearing capacity of the roof structure must be ensured by the customer. The general terms and conditions of business and warranty as well as the user agreement apply. The module release must also be checked by the customer.
<b>COMPONENTS</b>	Module clamps with earthing pins; single-layer horizontal/vertical or cross-connected rail arrangement; roof hooks; metal replacement tiles; optionally with base plate bridge
<b>MATERIALS</b>	Load-bearing connecting parts made of aluminum EN AW 6063 T66, EN AW 6005 T6 and stainless steel 1.4301 / A2-70; EPDM seals.