

3-phase inverter

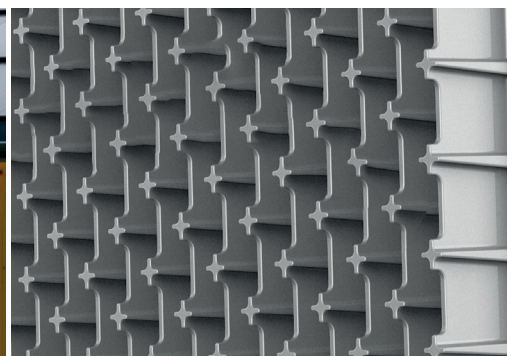
SK-WR

EFFICIENT!

Aimed at residential and small commercial installations, the SK-WR inverters offer unmatched performance and versatility for higher yield potential and longer generation windows. The SK-WR three-phase inverter types range from 4kw to 25kw.

Product advantages:

- // Low starting voltage for larger generation windows 97.4%
- // maximum efficiency
- // IP65 protection rating - Designed to offer maximum flexibility, suitable for outdoor use Remote monitoring for smartphone app or web portal
- // Improved security features through advanced hardware and software protection
- // Unique cooling fin design - larger surface area for heat transfer



INVERTER

SK-WR

| | | SK-WR-4 | SK-WR-5 | SK-WR-6 | SK-WR-8 | SK-WR-10 | SK-WR-12 | SK-WR-15 | SK-WR-17 | SK-WR-20 | SK-WR-25 | |
|---|-----|--|---------|---------|---------|----------|--------------|----------|----------|----------|----------|--|
| Entrance | | | | | | | | | | | | |
| Max. recommended DC power | W | 6000 | 7500 | 9000 | 12000 | 15000 | 18000 | 22500 | 25500 | 30000 | 37500 | |
| Max. DC voltage | v | 1100 | 1100 | 1100 | 1100 | 1100 | 1100 | 1100 | 1100 | 1100 | 1100 | |
| DC rated operating voltage | v | 600 | 600 | 600 | 600 | 600 | 600 | 600 | 600 | 600 | 600 | |
| Max. input current (Input A/Input B) | A | 14/14 | 14/14 | 14/14 | 14/14 | 14/14 | 14/14 | 28/28 | 28/28 | 28/28 | 28/28 | |
| Max. short-circuit current (Input A/Input B) | A | 18.2/18.2 18.2/18.2 18.2/18.2 18.2/18.2 18.2/18.2 18.2/18.2 36.4/36.4 36.4/36.4 36.4/36.4 36.4/36.4 | | | | | | | | | | |
| MPPT voltage range | Vdc | 140-1000 140-1000 140-1000 140-1000 140-1000 140-1000 140-1000 140-1000 140-1000 140-1000 155-850 | | | | | | | | | | |
| MPPT voltage range (full load) | Vdc | 190-850 230-850 300-850 380-850 455-850 275- 850 315-850 370-850 460-850 | | | | | | | | | | |
| Starting operating voltage | v | 140 | 140 | 140 | 140 | 140 | 140 | 140 | 140 | 140 | 140 | |
| No. MPPT tracker | | 2 | 2 | 2 | 2 | 2 | 2 | 2 | 2 | 2 | 2 | |
| Strands per MPPT tracker | | 1+1 | 1+1 | 1+1 | 1+1 | 1+1 | 1+1 | 2+2 | 2+2 | 2+2 | 2+2 | |
| Exit | | | | | | | | | | | | |
| AC power rating | W | 4000 | 5000 | 6000 | 8000 | 10000 | 12000 | 15000 | 17000 | 20000 | 25000 | |
| Max. AC power | VA | 4400 | 5500 | 6600 | 8800 | 11000 | 13200 | 16500 | 18700 | 22000 | 27500 | |
| Rated grid voltage (AC voltage range) | Vac | 3/N/PE, 220V/380V, 230V/400V 240V/415V | | | | | | | | | | |
| Rated network frequency | Hz | 50/60, ±5 | | | | | | | | | | |
| AC rated current | A | 5.8 | 7.2 | 8.7 | 11.6 | 14.5 | 17.4 21.7 | | 24.6 | 29.0 | 36.2 | |
| Max. AC current | A | 6.4 | 8.0 | 9.6 | 12.8 | 15.9 | 19.1 23.9 | | 27.1 | 31.9 | 39.9 | |
| Power factor/reactive power factor (cos phi) | | 1 (setting range 0.8 cap -0.8 ind) | | | | | | | | | | |
| Total harmonic distortion (THDI) at rated power | | <3% | | | | | | | | | | |
| Efficiency | | | | | | | | | | | | |
| MPPT efficiency | % | 99.8 | | | | | | | | | | |
| European Efficiency | % | 97.8 | | | | | | | | | | |
| Max. efficiency | % | 98.6 | | | | | | | | | | |
| Protection | | | | | | | | | | | | |
| integrated backup protection | | DC reverse polarity protection, anti-sliding protection, insulation monitoring, residual current monitoring, AC short circuit protection, AC output over-current protection, AC output over-voltage protection, over-voltage protection SPD AC: Type II / DC: Type II, temperature protection, integrated DC switch, AFCI protection | | | | | | | | | | |
| Protection class | | I according to IEC60529: IP65 | | | | | | | | | | |
| Security certificates | | IEC62109-1/2; EMC: IEC 61000-6-1/IEC 61000-6-2/IEC 61000-6-3/IEC61000-4-2/3/4/5/6/8; DC / AC overvoltage category: II / III | | | | | | | | | | |
| General data | | | | | | | | | | | | |
| Dimensions (WxHxD) | mm | 370x480x183.5 | | | | | | | | | | |
| Net weight | kg | 17 | 17 | 17 | 17 | 17 | 17 | 20 | 20 | 20 | 21 | |
| Cooling concept | | convection | | | | | | Fan | | | | |
| Normal noise emission | dB | | | | | | | | | | | |
| Operating temperature range | °C | - 25... +60 (derating at +45) | | | | | | | | | | |
| Storage temperature | | - 40... +70°C | | | | | | | | | | |
| Max. operating altitude | m | 3000 | | | | | | | | | | |
| Humidity | | 0-100% (non-condensing) | | | | | | | | | | |
| Own consumption (night) | W | < 3 | | | | | | | | | | |
| Pollution level | | II | | | | | | | | | | |
| Communication interfaces | | Counter, DRM, USB update, E-Stop LCD | | | | | | | | | | |
| display | | display, touch key, app, web portal | | | | | | | | | | |
| guarantee | | ten years | | | | | | | | | | |

This data sheet is not legally binding. Actual specifications and/or product features may vary. Subject to change. Caution: Read the safety and installation instructions before using the product. When purchasing, the currently valid guarantee declarations and the general terms and conditions of delivery and business of KOTO Photovoltaics GmbH apply. Further details can be found on our website: 11/22